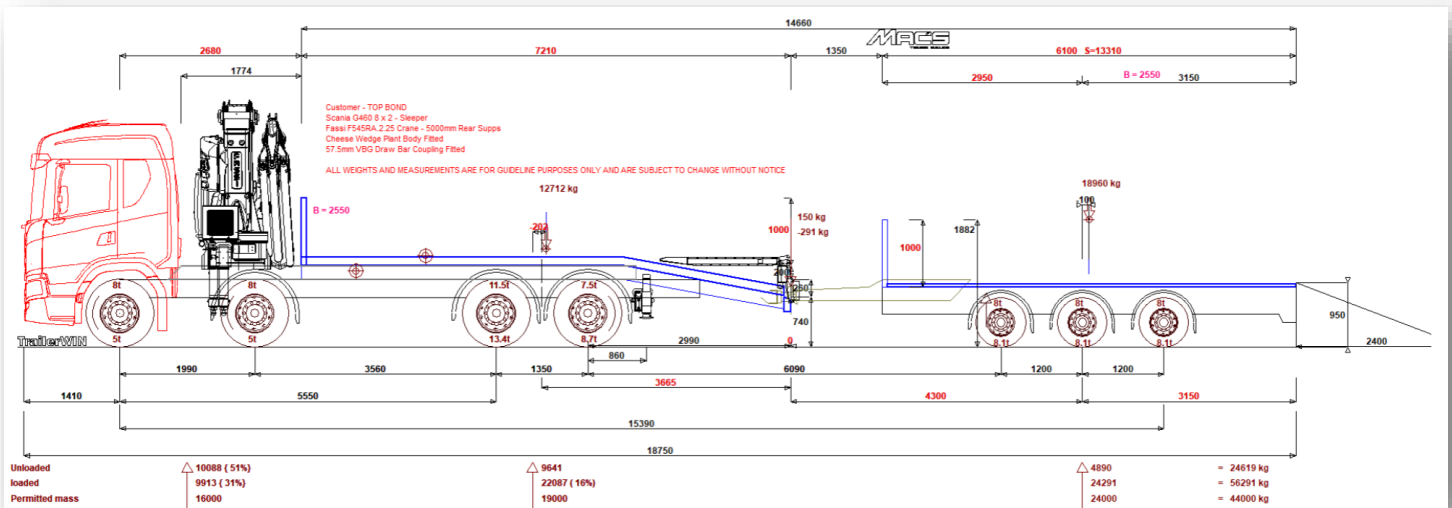


MV25 FBE – Scania G460XT with Fassi F545RA.2.25 XE-Dynamic & SDC Tri Axle Commercial Flat



Truck Specification – Scania G460XT

Scania G460XT, 8×2, 32T GVW, Hi-Line sleeper cab

Axles: Rear lift & steer back axle

Features:

- LED roof beacon bar with stainless bridge
- LED strobes front & rear
- 4× LED work lights on headboard
- Rear air suspension, climate control

Compliance: DVS compliant for London operations (Awaiting Permit - TBC)

Dimension	Value
Overall length (tractor unit)	11,300 mm
Width	2,550 mm
Front overhang	1,410 mm
Wheelbase	5,550 mm
Body bed height	1,200 mm
Ramp length/angle	2,400 mm @ 19.94°
Drawbar height	740 mm



Crane Specification – Fassi F545RA.2.25 XE-Dynamic

Type: 5 hydraulic extensions + 3 manual extensions (manuals require two-person operation)

Rotation: 400° continuous

Features:

- Full remote control with LED display
- Four operational speeds
- FSC-II stability control
- Lane Lock System – restricts slewing into live traffic lanes during lane closure work
- Front swing-up legs
- Dual battery with cab charger
- Full Fassi warranty & handover training

Max Lift Capacities (Standard Working Position)

- 15,225 kg @ 2.85 m
- 10,725 kg @ 4.30 m
- 10,055 kg @ 4.60 m
- 7,055 kg @ 6.35 m
- 5,265 kg @ 8.20 m
- 4,135 kg @ 10.10 m
- 3,385 kg @ 12.00 m
- 2,805 kg @ 14.20 m
- 2,550 kg @ 16.50 m (manual extension)
- 2,100 kg @ 18.90 m (manual extension)
- 1,650 kg @ 21.30 m (manual extension)



Over-the-Cab Derated Capacities – Manuals Not Extended

- 5 EXT – 14.20 m: 1,700 kg
- 4 EXT – 12.00 m: 2,010 kg
- 3 EXT – 10.10 m: 2,390 kg
- 2 EXT – 8.20 m: 2,945 kg
- 1 EXT – 6.35 m: 3,800 kg

Over-the-Cab Derated Capacities – Manuals Fully Extended (2-man operation)

- Manuals –
- 3 EXT - 21.30 m: 1,150 kg
- 2 EXT – 18.90 m: 1,300 kg
- 1 EXT – 16.50 m: 1,485 kg



Body Specification – Cheese Wedge

- Hydraulic bi-fold ramps (2.4 m)
- Hydraulic landing legs
- Fall restraint straps & posts
- Stainless toolboxes with trays on top
- Heavy-duty 3 ft headboard with 4× chain hooks
- Aluminium chequer mud wings & rear light guards
- VBG drawbar hitch
- Ferry lashing rings (floor & side raves), twist locks, H bars - 8000 kg RC control Wince
- Additional lighting: 4× lamps on body side rave (independent switches)



Trailer Specification – SDC Tri Axle Commercial Flat

Bed length: 6.1 m (20 ft)

Axles: Tri-axle, front lifting axle, 9T SAF drum brake axles

Decking: 28 mm keruing hardwood flooring

Capacity: 16,500 kg towing beam

Fittings:

- 4× twist locks for 20 ft container
- Rope hooks to every cross member
- 12× Goodyear tyres
- Stainless toolbox on chassis
- Deck lashing rings, detachable headboard, thermoplastic mud wings
- Raise/lower air suspension

Lighting: Full LED

Dimensions

Overall trailer length	7,450 mm
Bed length	6,100 mm
Width	2,550 mm
Bed height	~1,000 mm
Axle spacing	1,200 mm
Kingpin to first axle	6,090 mm
Ramp length/angle	2,400 mm @ 19.94°
Drawbar eye height	740 mm



Load Chart & Technical Diagrams

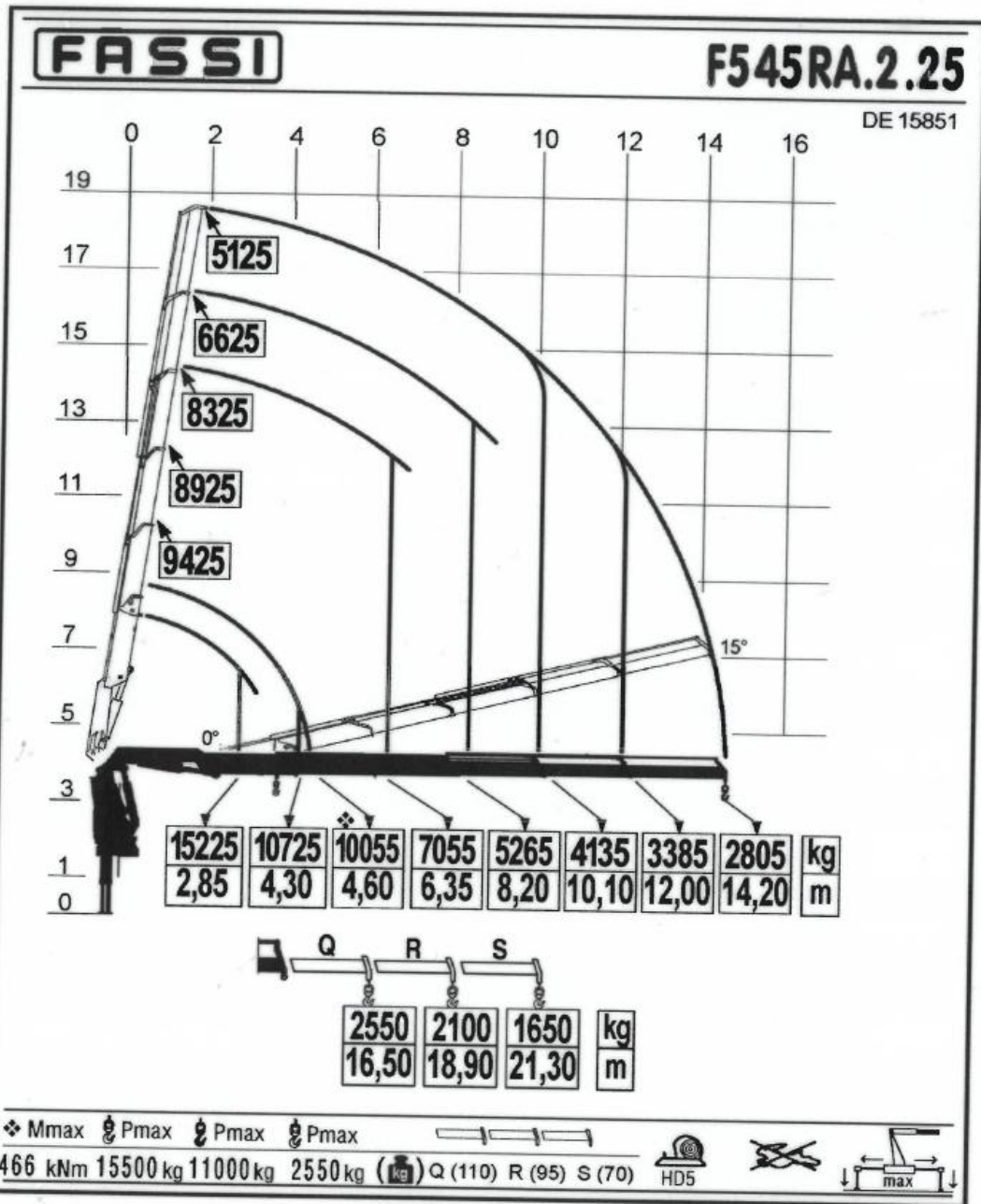
Fassi F545RA.2.25 XE-Dynamic full load chart

FASSI

Via Roma, 110
14021 Albino (BG)
Tel: +39 035 776400
Fax: +39 035 756020
www.fassi.com
fassi@fassi.com

F545RA.2.25 xe-dynamic - Load Diagram

LOAD DIAGRAM WITH LIFTING MOMENT LIMITING DEVICE



MV25 FBE - LOLER Report (Manuals Not Extended)

Alexander Park, Crosland Road, Huddersfield, West Yorkshire, HD3 3ZA



Alexander Park, Crosland Road, Huddersfield, West Yorkshire, HD3 3ZA

Report of Thorough Examination (Loader and Attachment)

Date	25/07/2025	Report Number	N12223
Loader Make and Model		Loader Serial Number and Manufacture Date	
FASSI	F545RA.2.25	5450-1398	2025
Leg Spread Beam Footprint			
FRONT; 5500MM		REAR; 7900MM	
Crane Details			
RADIO CONTROLLED CRANE WITH 5 HYDRAULIC EXTENSIONS + 3 MANUALS - FSC-SII			
Vehicle Details			
REGISTRATION	MV25 FBE	Make and	SCANIA G
Chassis Number	5773592		
Owner Name and Address		Address of Examination	
TOP BOND OYESTER QUAY CASTLE ROAD SITTINBOURNE KENT ME10 3EU		Macs Truck Sales Ltd Alexander Park Crosland Road Huddersfield West Yorkshire HD3 3ZA	
Reason for Test	Commissioning LOLER Reg 6		
Safe Working Load and Relevant Radii, Jib Lengths and Counterweights			
Radius (M)	Rated Load (kg)	Test Load (kg)	Overload %
14.2	2805	3600	26%
12	3385		
10.1	4135		
8.2	5265		
6.35	7055		
		HEIGHT INDICATOR WARNING IN CAB	YES
OVER CAB DE-RATED CAPACITIES			
		1700KG @ 14.2M @ 260BAR 1150KG @ 21.30M	
Details of Test and Test Conditions			
Dry Conditions			
Defective Parts, Repair, Renewal or Alterations Required		Condition of Attachment	
SERVICE LOAD IS 275KG LESS DUE TO 3 MANUALS FITTED		New	
		Date Next Test Due	
		24/07/2026	
Declaration			

I hereby declare that the equipment described in this record was tested and thoroughly examined in accordance to the appropriate provisions and found free from any defect likely to affect safety and the above particulars are correct.

Signature		Date of Test and Exam	25/07/2025
Print and Examiner ID Number			
Verified By	Craig Graham		

MV25 FBE - LOLER Report (Manuals Extended)



Alexander Park, Crosland Road, Huddersfield, West Yorkshire, HD3 3ZA

Report of Thorough Examination (Loader and Attachment)

Date	17/06/2025	Report Number	N12223		
Loader Make and Model		Loader Serial Number and Manufacture Date			
FASSI F545RA.2.25		5450-1398		2025	
Leg Spread Beam Footprint					
FRONT; 5500MM			REAR; 7900MM		
Crane Details					
RADIO CONTROLLED CRANE WITH 5 HYDRAULIC EXTENSIONS + 3 MANUALS - FSC-SII					
Vehicle Details					
REGISTRATION	MV25 FBE	Make and Model	SCANIA G		
Chassis Number	5773592				
Owner Name and Address			Address of Examination		
TOP BOND OYESTER QUAY CASTLE ROAD SITTINBOURNE KENT ME10 3EU			Macs Truck Sales Ltd Alexander Park Crosland Road Huddersfield West Yorkshire HD3 3ZA		
Reason for Test	Commissioning LOLER Reg 6				
Lifting Capacities with Variable Outrigger Positioning					
Over the Cab D Rate Chart Manuals In Not Extended			Lift Capacity Chart		
Position	Distance (m)	Capacity (kgs)	Monitoring Position Level - Crane only	Capacity KGS	Distance (m)
5 EXT	14.20	1700	100%	2805	14.2
4 EXT	12.00	2010	75%	2805	11.5
3 EXT	10.10	2390	50%	2805	7.9
2 EXT	8.20	2945	25%	2805	5
1 EXT	6.35	3800			
			Monitoring Position Level - with Manual Ext.	Capacity KGS	Outrigger Distance (m)
			1 EXT	2550	FULLY DEPLOYED
			2 EXT	2100	FULLY DEPLOYED
			3 EXT	1650	FULLY DEPLOYED
Details of Test and Test Conditions					
Dry Conditions					
Defective Parts, Repair, Renewal or Alterations Required			Condition of Attachment		
SERVICE LOAD IS 275KG LESS DUE TO 3 MANUALS FITTED			New		
			Date Next Test Due		
			24/07/2026		
Declaration					

I hereby declare that the equipment described in this record was tested and thoroughly examined in accordance to the appropriate provisions and found free from any defect likely to affect safety and the above particulars are correct.

Signature		Date of Test and Exam	25/07/2025
Print and Examiner ID Number			
Verified By	Craig Graham		
Signature			

MV25 FBE – LOLER Report (Over Cab De-Rated – Manuals Fully Extended)



Alexander Park, Crosland Road, Huddersfield, West Yorkshire, HD3 3ZA

Report of Thorough Examination (Loader and Attachment)

Date	25/07/2025		Report Number	N12223	
Loader Make and Model			Loader Serial Number and Manufacture Date		
FASSI F545RA.2.25			5450-1398 2025		
Leg Spread Beam Footprint					
FRONT; 5500MM			REAR; 7900MM		
Crane Details					
RADIO CONTROLLED CRANE WITH 5 HYDRAULIC EXTENSIONS + 3 MANUALS - FSC-SII					
Vehicle Details					
REGISTRATION	MV25 FBE		Make and Model	SCANIA G	
Chassis Number	5773592				
Owner Name and Address			Address of Examination		
TOP BOND OYESTER QUAY CASTLE ROAD SITTINBOURNE KENT ME10 3EU			Macs Truck Sales Ltd Alexander Park Crosland Road Huddersfield West Yorkshire HD3 3ZA		
Reason for Test	Commissioning LOLER Reg 6				
Lifting Capacities with Variable Outrigger Positioning					
Over the Cab D Rate Chart Manuals Fully Extended			Lift Capacity Chart		
Position	Distance (m)	Capacity (kgs)	Monitoring Position Level - Crane only	Capacity KG	Distance (m)
3 mans	21.30	1150	100%	2805	14.2
	18.90	1300	75%	2805	11.5
	16.50	1485	50%	2805	7.9
			25%	2805	5
			Monitoring Position Level - with	Capacity KG	Outrigger Distance (m)
			1 EXT	2550	FULLY DEPLOYED
			2 EXT	2100	FULLY DEPLOYED
			3 EXT	1650	FULLY DEPLOYED
Details of Test and Test Conditions					
Dry Conditions					
Defective Parts, Repair, Renewal or Alterations Required			Condition of Attachment		
SERVICE LOAD IS 275KG LESS DUE TO 3 MANUALS FITTED			New		
			Date Next Test Due		
			24/07/2026		
Declaration					

I hereby declare that the equipment described in this record was tested and thoroughly examined in accordance to the appropriate provisions and found free from any defect likely to affect safety and the above particulars are correct.

Signature		Date of Test and Exam	25/07/2025
Print and Examiner ID Number			
Verified By	Craig Graham		
Signature			